

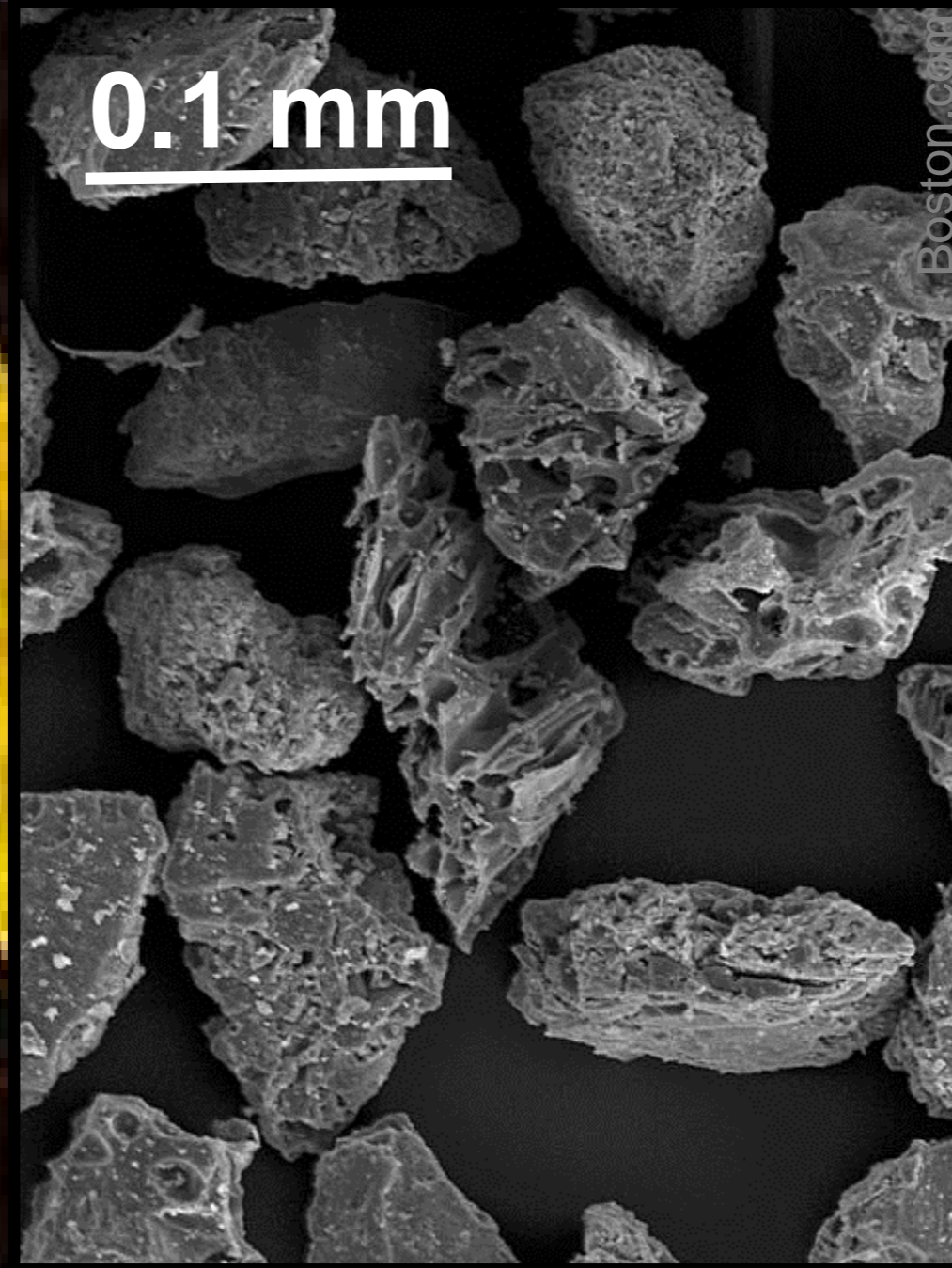
# Volcanic Hazards: Ash



Guardian

Explosive eruptions can send huge **ash** clouds high into the air. Ash later falls back to the ground, but it can be carried hundreds of miles from the volcano.

Ash is very small grains of rock. Some ash forms when magma is blown into pieces by an explosive eruption; some forms when solid pieces of lava grind together.



USGS

Small ash particles can cause breathing problems and lung disease.



© AP

Ash looks like dust, but it's actually rock – so it's very heavy. Ash fall often makes roofs collapse, and it made this plane tip over.

Ash coats everything, killing plant life and contaminating water and soil.



National Geographic

Poster © Jeannie Scott / NERC



istopnik.com



Equador Images



poosci.com

Ash clogs jet engines, and scratches the windows so it is hard to see out.

Ash makes driving very difficult. Not only is it hard to see through ash clouds, but it makes the roads very slippery.

