

Sand Dune Ecology

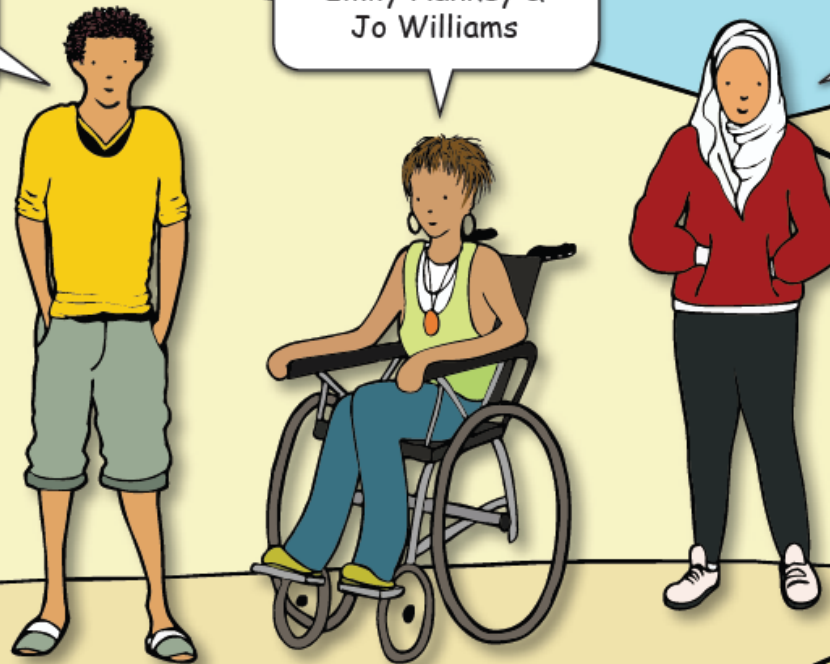
Concept Cartoons®

A science-focused resource for ages 8-14

By Brenda Keogh,
Stuart Naylor

Emily Hankey &
Jo Williams

Illustrations by
Ged Mitchell



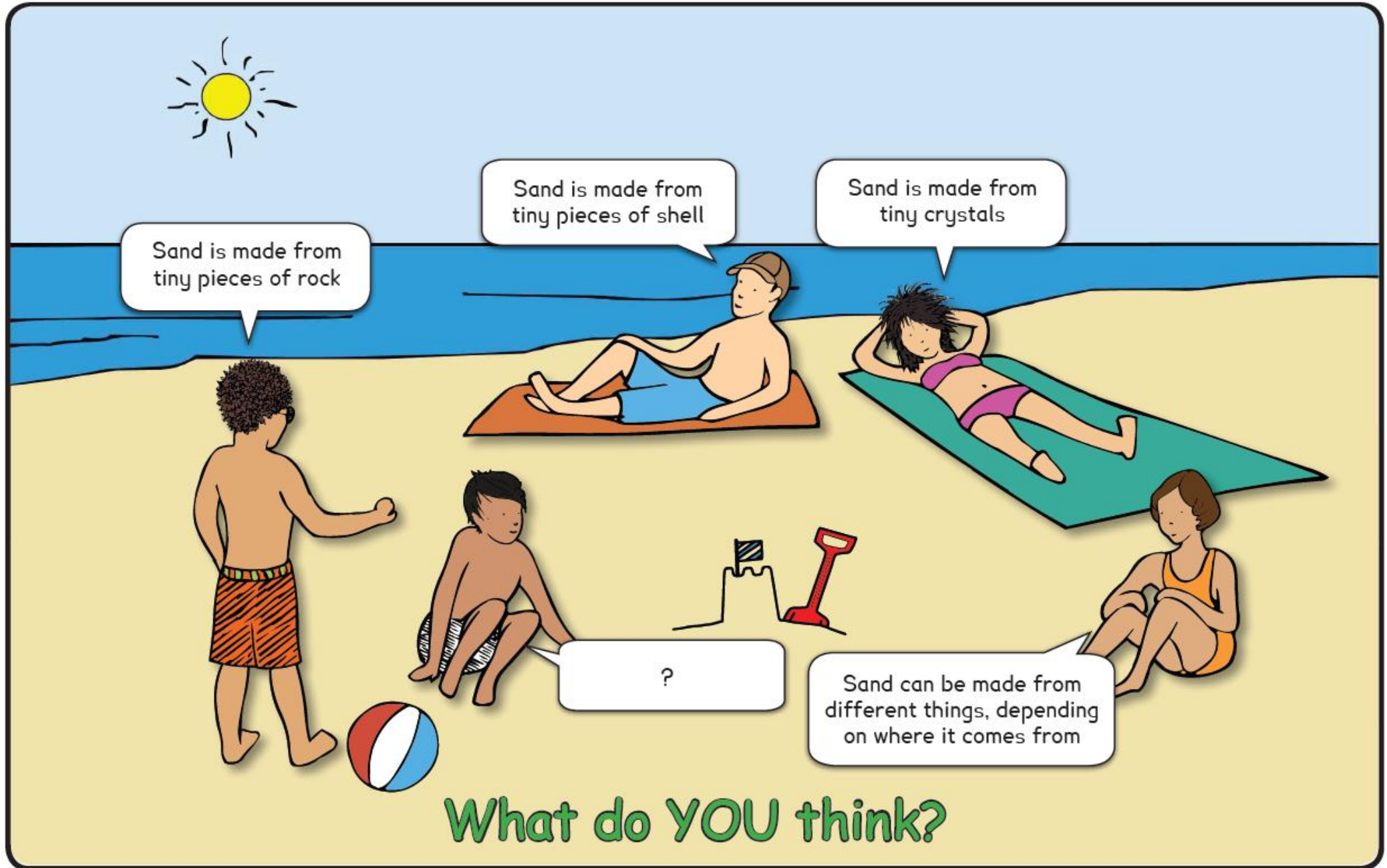
Index

Click titles below:

- | | | |
|--|---|--|
| ▶ 1. Sand | ▶ 11. Useful dunes | ▶ 21. Where marram grass grows |
| ▶ 2. Sandy dunes | ▶ 12. Safety | ▶ 22. Impact of marram grass |
| ▶ 3. Forming dunes | ▶ 13. Shells | ▶ 23. Leaves |
| ▶ 4. New sand dunes | ▶ 14. Salty sand | ▶ 24. Roots |
| ▶ 5. Marching dunes | ▶ 15. Behind the dunes | ▶ 25. Euphorbia |
| ▶ 6. Moving sand dunes | ▶ 16. Puddles | ▶ 26. Tortula moss |
| ▶ 7. Old dunes | ▶ 17. Rubbish | ▶ 27. Rabbits |
| ▶ 8. Changing dunes | ▶ 18. Sand and soil | ▶ 28. Miner bees |
| ▶ 9. Erosion | ▶ 19. Trees | ▶ 29. Snails |
| ▶ 10. Damaged dunes | ▶ 20. Marram grass survival | ▶ 30. Gulls |

Safety & references

1. Sand



Notes

Sand can be made from different things, depending on where it comes from. The most common type of sand is tiny quartz crystals (made from silicon dioxide) that have eroded from rocks. The composition of sand varies according to which type of rock has been eroded. For example, old volcanic rock that has been eroded usually makes black sand. Sand is also made from tiny pieces of shell (made from calcium carbonate) and bone. This can come from empty shells of molluscs and other invertebrates, from vertebrate skeletons, from coral reefs that have eroded, and from eroded limestone rock. Fantastic pictures of magnified sand grains can be found on internet sites such as sandgrains.com.